

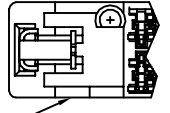
Tous droits strictement réservés. Reproduction ou communication à des tiers interdite sous quelque forme que ce soit sans autorisation écrite du propriétaire. Propriété de c FCI. Droits de reproduction FCI.



All rights strictly reserved. Reproduction or issue to third parties in any form whatever is not permitted without written authority from the proprietor. Property of FCI. Copyright FCI.

CONFIDENTIAL

POLARIZATION PEG
 (SEE CHART)
 NOTE 5



SHORTENED STANDOFF
 ON 72442-XXS AND
 OPTION DESIGN FOR 72442-XXXLF

DETAIL B

| mat'l. code | | | | tolerances unless otherwise specified | | | | CUSTOMER COPY | |
|-------------|----------------|-----|----------|---------------------------------------|---|----------------------|--|---------------|----|
| itr | ecn no | dr | date | linear | | .X ±.3 | | projection | MM |
| C | V00519 | EPK | 2/11/00 | .XX ±.13 | | .XXX ±.051 | | | |
| D | V00523 | EPK | 4/6/00 | angles | | 0° ±2° | | | |
| E | V01970 | CGD | 8/10/00 | dr | | M. FETROW 9/24/96 | | | |
| F | V02706 | LSS | 10/23/00 | enr | | A. RAISTRICK 9/24/96 | | scale 2:1 | A |
| G | S04-0250 | GLL | 11/22/04 | chr | | GL L00 11/22/04 | | | |
| H | S04-0275 | GLL | 12/23/04 | appd | | JOEY NG 11/22/04 | | | |
| sheet index | revision sheet | H | H | H | H | | | | |
| | | 1 | 2 | 3 | 4 | | | | |

| | | | |
|--------------------------------|--|--------------------|--|
| FCI | | www.fciconnect.com | |
| title | | | |
| SCA-2 & FIBER CHANNEL | | | |
| 80 POS. RECEPT. ASS'Y EXT. HT. | | | |
| product family | | code | |
| SCA-2 | | - | |
| size | | dwg no | |
| A | | 72442 | |
| | | sheet | |
| | | 1 of 4 | |

cage code
22526

ACAD

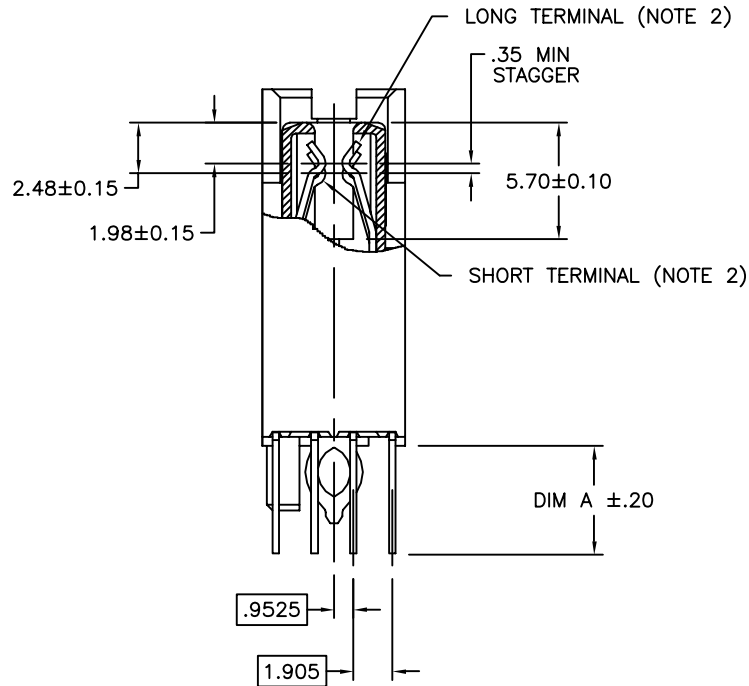
PDM: Rev:H

STATUS: Released

Printed: Mar 14, 2007


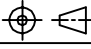

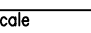
Tous droits strictement reserves. Reproduction ou communication a des tiers interdite sous quelque forme que ce soit sans autorisation ecrite du proprietaire. Propriete de c FCI. Droits de reproduction FCI.

All rights strictly reserved. Reproduction or issue to third parties in any form whatever is not permitted without written authority from the proprietor. Property of FCI. Copyright FCI.



SECTION A-A

CONFIDENTIAL

| | | | | | | | |
|-------------|----------------|---------------------------------------|------|---------------|------------|---|--|
| mat'l. code | | tolerances unless otherwise specified | | CUSTOMER COPY | |  www.fciconnect.com | |
| ltr | ecn no | dr | date | linear | .X ±.3 | projection |  |
| H | | | | | .XX ±.13 | | |
| | | | | | .XXX ±.051 | | |
| | | | | angles | 0° ±2' |  MM |  2:1 |
| | | | dr | M. FETROW | 9/24/96 | | |
| | | | enr | A. RAISTRICK | 9/24/96 | | |
| | | | chr | GL L00 | 11/22/04 | | |
| | | | appd | JOEY NG | 11/22/04 | | |
| sheet index | revision sheet | | | | | | |
| | | | | | | product family SCA-2 code - size dwg no sheet 2 of 4 | |

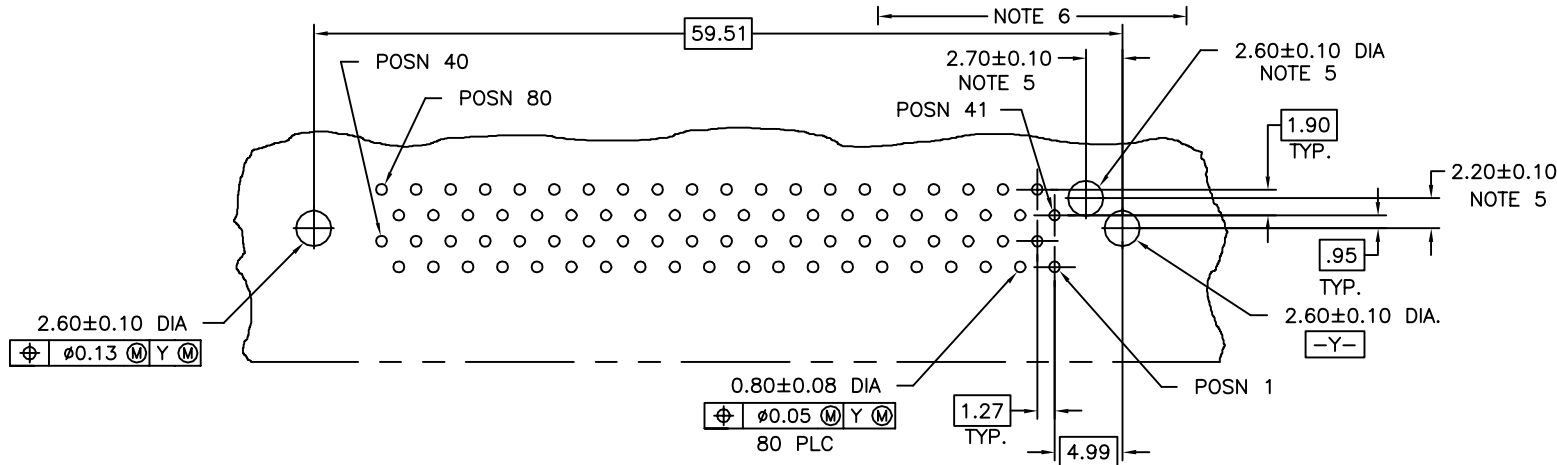
cage code 22526

ACAD

Tous droits strictement reserves. Reproduction ou communication a des tiers interdite sous quelque forme que ce soit sans autorisation ecrite du proprietaire. Propriete de c FCI. Droits de reproduction FCI.

All rights strictly reserved. Reproduction or issue to third parties in any form whatever is not permitted without written authority from the proprietor. Property of FCI. Copyright FCI.

| PRODUCT NO. | DIM A | POLARIZATION PEG | PLATING | RECOMMENDED P.C. BOARD THICKNESS | PRODUCT NO. | PLATING |
|-------------|-------|------------------|---------|--|-------------|---------|
| 72442-001 | 3.79 | YES | NOTE 4 | 2.36mm (0.093") AND 3.18mm (0.125") | 72442-101 | NOTE 6 |
| -001S | | | | | -101S | |
| -002 | | | | | -102 | |
| -002S | -102S | | | | | |
| -003 | -103 | | | | | |
| -003S | -103S | | | | | |
| -004 | 4.60 | NO | -104 | 72442-104S | | |
| -004S | | | | | | |



NOTES :

- TRUE POSITION NOTES APPLY AT TERMINAL TIP.
- CONTACTS IN POSITIONS 2 THRU 35, 44 AND 47 THRU 74 ARE SHORT TERMINALS.
CONTACTS IN POSITIONS 1, 36 THRU 43, 45, 46, AND 75 THRU 80 ARE LONG TERMINALS.
- RAW MATERIALS:
HOUSING: HTN, UL94V-0, COLOR: BLACK
CONTACTS: PHOSPHOR-BRONZE
- CONTACT PLATING: 30u" (0.76um) MIN. GXT PLATING OVER 50u" (1.27um) NICKLE MIN. UNDERPLATE IN CONTACT AREA. 20u" (0.5um) MIN-60u" (1.5um)MAX TIN-LEAD PLATING OVER 50u" (1.27um) MIN. NICKLE UNDERPLATE IN P.C. BOARD LEG AREA. 50u" (1.27um) MIN. NICKLE UNDERPLATE OVER REMAINING AREA.
- DIMENSIONS DO NOT APPLY TO CONNECTOR STYLES WITHOUT POLARIZATION PEG. (SEE CHART)
- CONTACT PLATING: 30u" (0.76um) MIN. GOLD PLATING OVER 50u" (1.27um) NICKLE MIN. UNDERPLATE IN CONTACT AREA. 20u" (0.5um) MIN-60u" (1.5um)MAX TIN-LEAD PLATING OVER 50u" (1.27um) MIN. NICKLE UNDERPLATE IN P.C. BOARD LEG AREA. 50u" (1.27um) MIN. NICKLE UNDERPLATE OVER REMAINING AREA.

RECOMMENDED PC BOARD MOUNTING DIMENSIONS COMPONENT SIDE

7. PART NUMBERS WITH SUFFIX "S" ARE MANUFACTURED WITH BRIGHT FINISH TIN-LEAD PLATING IN P.C. BOARD LEG AREA.

CONFIDENTIAL

| | | | | | | | |
|-------------|----------------|---------------------------------------|------|---------------|----------------------|------------------------|--------------------------------|
| mat'l. code | | tolerances unless otherwise specified | | CUSTOMER COPY | | FCI www.fciconnect.com | |
| ltr | ecn no | dr | date | linear | .X ±.3 | projection | title |
| H | | | | | .XX ±.13 | MM | SCA-2 & FIBER CHANNEL |
| | | | | angles | .XXX ±.051 | 2:1 | 80 POS. RECEPT. ASS'Y EXT. HT. |
| | | | | dr | 0° ±2° | | product family |
| | | | | enr | M. FETROW 9/24/96 | | SCA-2 |
| | | | | chr | A. RAISTRICK 9/24/96 | | code |
| | | | | appd | GL L00 11/22/04 | | - |
| | | | | | JOEY NG 11/22/04 | | size |
| | | | | | | | dwg no |
| | | | | | | | 72442 |
| sheet index | revision sheet | | | | | | scale |
| | | | | | | | 2:1 |
| | | | | | | | sheet |
| | | | | | | | 3 of 4 |

cage code 22526

ACAD

PDM: Rev:H

STATUS:Released

Printed: Mar 14, 2007

Tous droits strictement reserves. Reproduction ou communication a des tiers interdite sous quelque forme que ce soit sans autorisation écrite du propriétaire. Propriete de c FCI. Droits de reproduction FCI.

All rights strictly reserved. Reproduction or issue to third parties in any form whatever is not permitted without written authority from the proprietor. Property of FCI. Copyright FCI.



| | | | | | | |
|-------------|-------|------------------|---------|--|-------------|---------|
| PRODUCT NO. | DIM A | POLARIZATION PEG | PLATING | RECOMMENDED P.C. BOARD THICKNESS | PRODUCT NO. | PLATING |
| 72442-001LF | 3.79 | YES | NOTE 9 | 2.36mm (0.093") AND 3.18mm (0.125") | 72442-201LF | NOTE 8 |
| -002LF | 3.79 | NO | | | | |
| -003LF | 4.60 | YES | | | | |
| 72442-004LF | 4.60 | NO | | | | |

NOTE 8

NOTES :

- ⑧ CONTACT PLATING: 30u" (0.76um) GOLD PLATING OVER 50u" (1.27um) NICKLE UNDERPLATE IN CONTACT AREA. 20u" (0.5um) - 60u"(1.5um) TIN PLATING OVER 50u" (1.27um) -100u" (2.54um) NICKEL UNDERPLATE IN P.C. BOARD LEG AREA. 50u" (1.27um) NICKEL UNDERPLATE OVER REMAINING AREA.
- ⑨ CONTACT PLATING: 30u" (0.76um) GXT PLATING OVER 50u" (1.27um) NICKLE UNDERPLATE IN CONTACT AREA. 20u" (0.5um) - 60u"(1.5um) TIN PLATING OVER 50u" (1.27um) -100u" (2.54um) NICKEL UNDERPLATE IN P.C. BOARD LEG AREA. 50u" (1.27um) NICKEL UNDERPLATE OVER REMAINING AREA.
- ⑩ THE HOUSING WILL WITHSTAND EXPOSURE TO 260° C PEAK TEMPERATURE FOR 10 SECONDS IN A CONVECTION, INFRA RED VAPOR PHASE REFLOW OVEN.
- ⑪ THIS PRODUCT MEETS EUROPEAN UNION DIRECTIVES AND OTHER COUNTRY REGULATIONS AS DESCRIBED IN GS-22-008.
- 12 PART NUMBERS ENDING IN "LF" MEANS FOR NOTE 11 LEAD FREE IDENTIFICATION.

CONFIDENTIAL

| | | | | | | | |
|-------------|----------------|---------------------------------------|------|---------------|----------------------|--------------------|--|
| mat'l. code | | tolerances unless otherwise specified | | CUSTOMER COPY | | www.fciconnect.com | |
| ltr | ecn no | dr | date | linear | .X ±.3 | projection | |
| H | | | | | .XX ±.13 | | |
| | | | | | .XXX ±.051 | | |
| | | | | angles | 0° ±2' | | title SCA-2 & FIBER CHANNEL 80 POS. RECEPT. ASS'Y EXT. HT. product family SCA-2 size dwg no A 72442 code - sheet 4 of 4 |
| | | | | dr | M. FETROW 9/24/96 | | |
| | | | | enr | A. RAISTRICK 9/24/96 | | |
| | | | | chr | GL L00 11/22/04 | scale 2:1 | A 72442 |
| | | | | appd | JOEY NG 11/22/04 | | |
| sheet index | revision sheet | | | | | | |

cage code 22526

ACAD